



Karl-Volkert-Ring

Sperberstr.

73/94

73/120

77/4

73/95

73/98

73/99

73/177

73/159

73/100

73/81

73/85

73/86

73/87

73/101

73/91

73/5

74/13

74/11

77/18

77/37

77/38

77/39

77/44

17, 19, 21, 23, 5, /134, /135, /136, /137, /138, /139, /141, /146, /147, /148, /149, /155, /156, /157

3/142, /160, /161, 73/162, 73/164, /165, /166, /167

32, 34, 36, 38, 73/81, 73/85, 73/86, 73/87

7a, 73/91

50, 10, 73/94, 73/120

48, 12, 14, 73/95, 73/98, 73/99

44, 16, 18, 73/177, 73/100

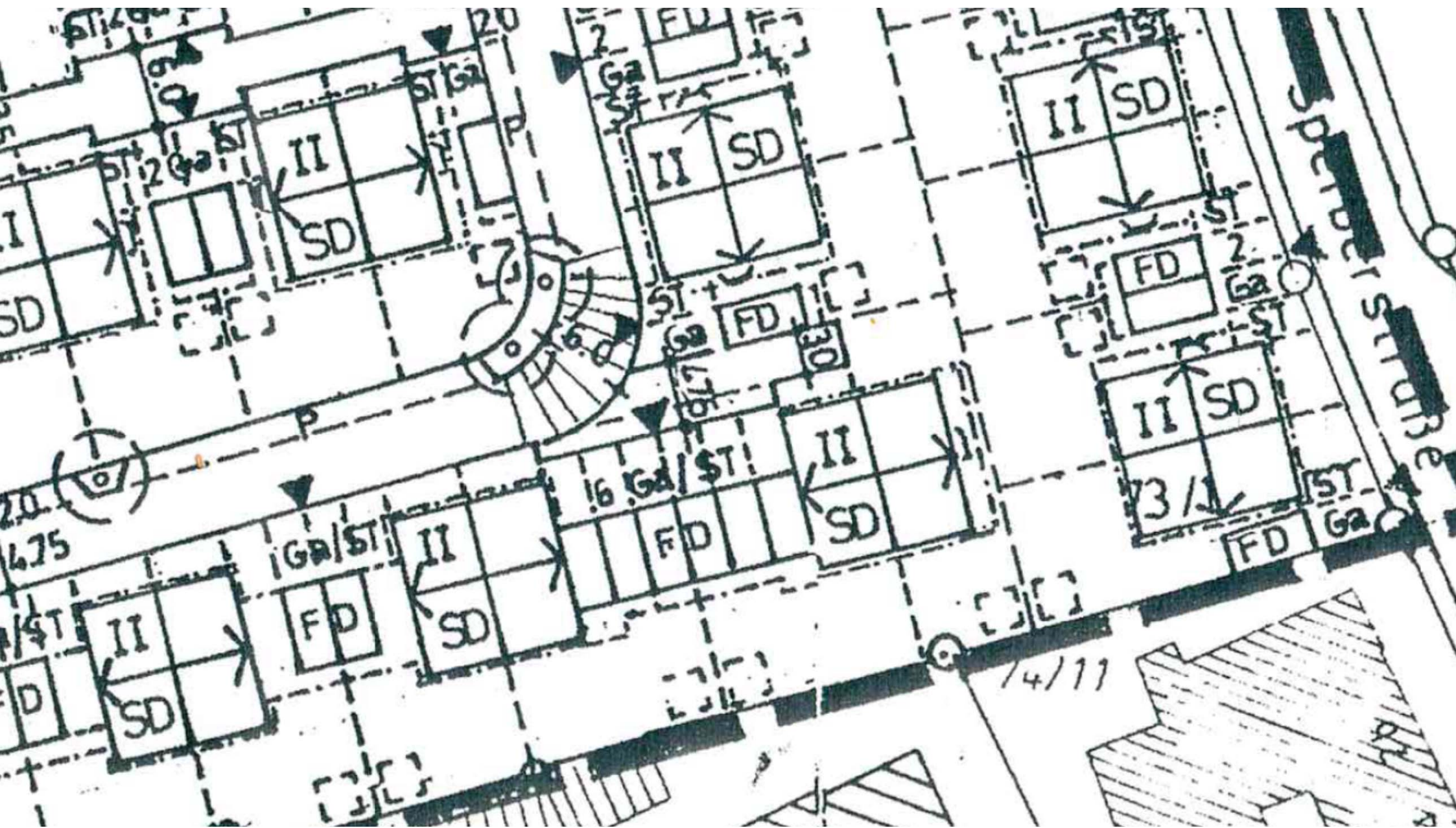
11, 20, 22, 73/159, 73/100

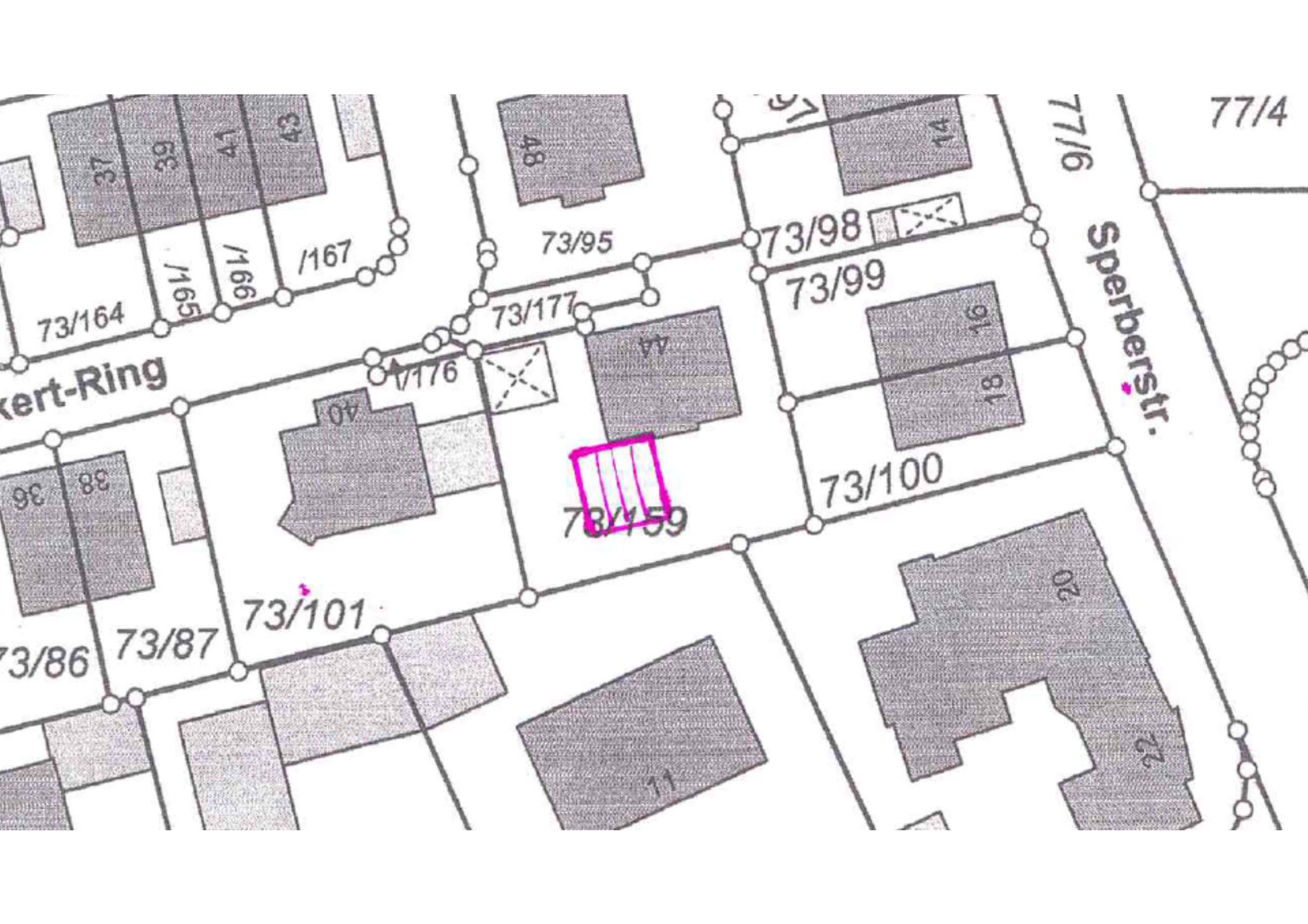
1, 77/4

2, 4, 77/18

3, 77/39

77/44





ca 56,25 m²
 ≈ 56 m²
 56 m² x 3,8 m

7,50
 3,65

3,65

S-10 v.
 ca 10 v.

50

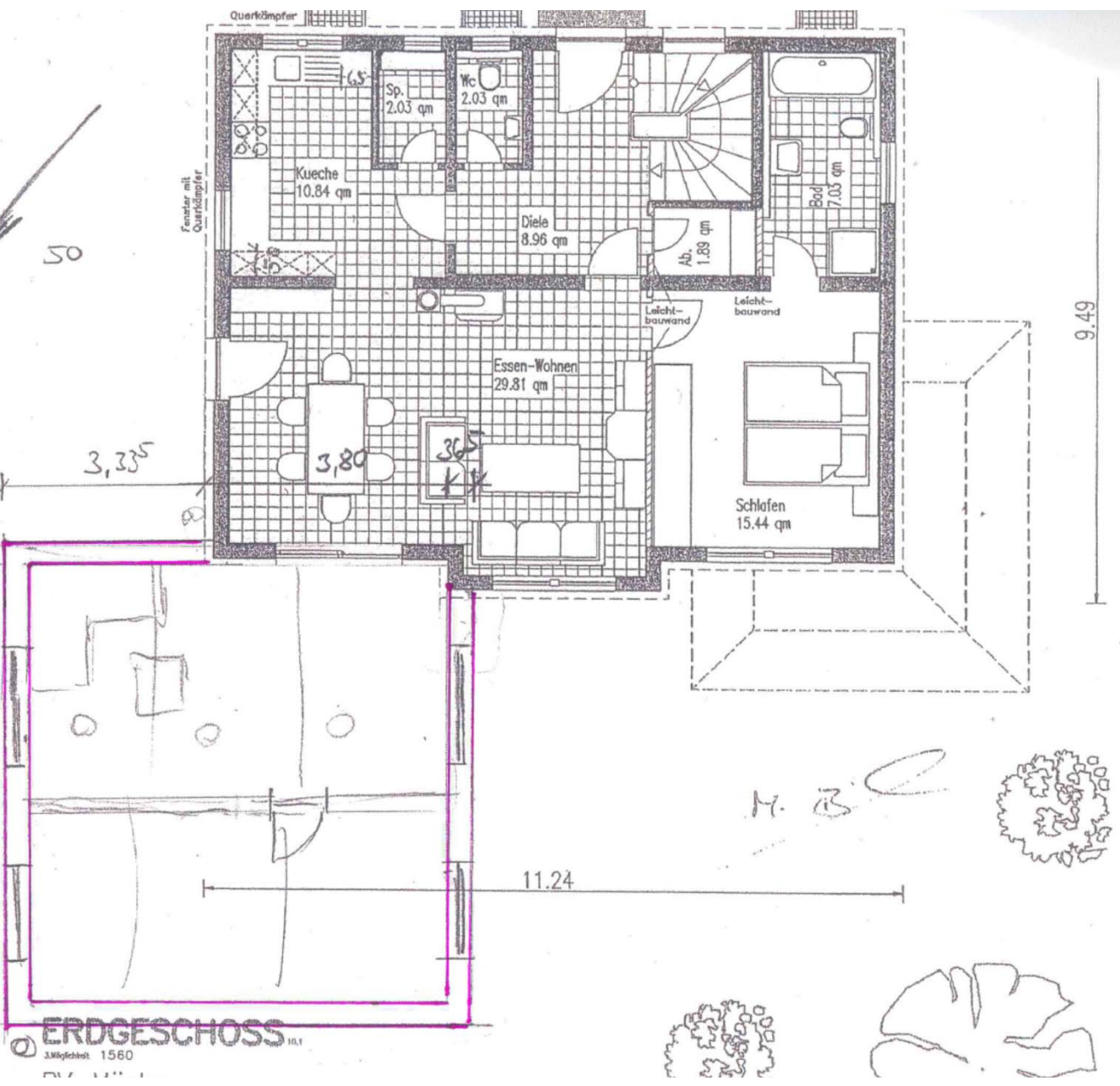
3,335

3,80

3,65

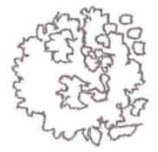
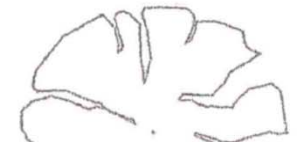
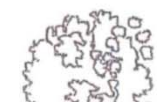
11,24

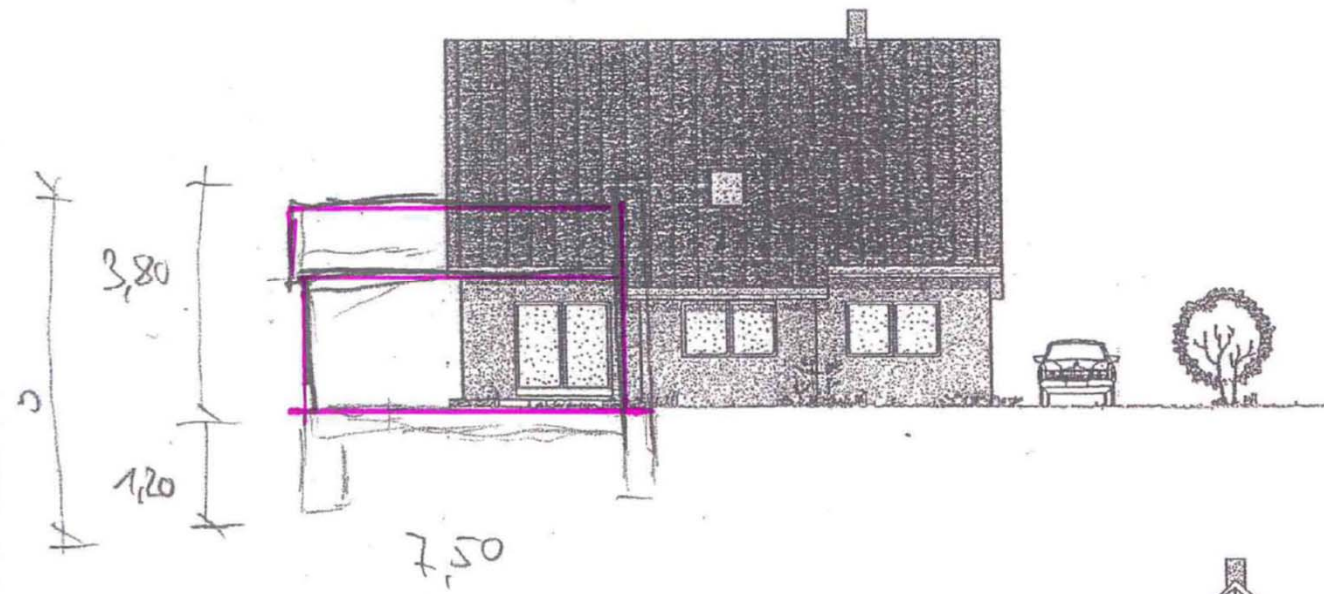
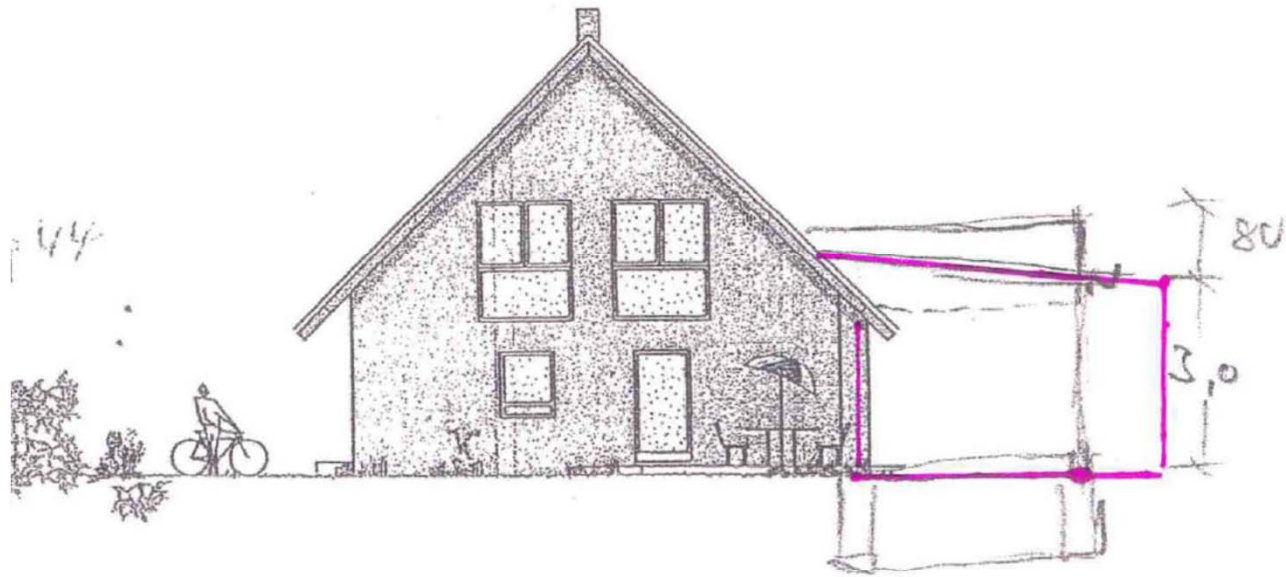
9,49



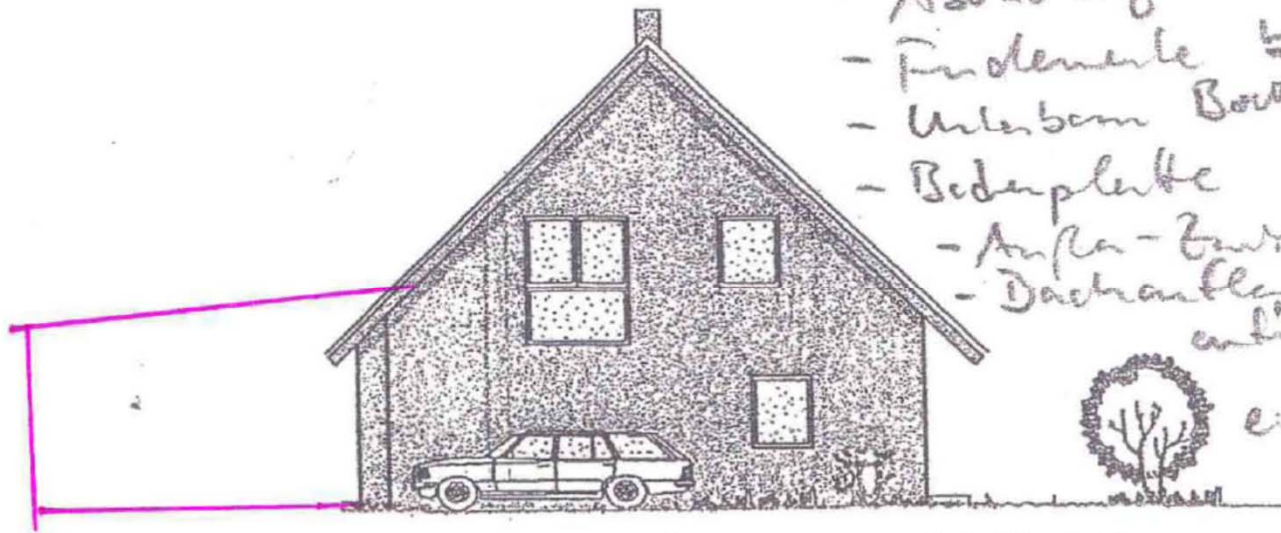
ERDGESCHOSS
 Mikrotel 1560

H. B.





- Abschleifung
- Fundamente $\frac{1}{2}$
- Unterbaum BSW
- Bodenplatte
- Anfa-Bau
- Dachstuhl



3.85 m

10 m

