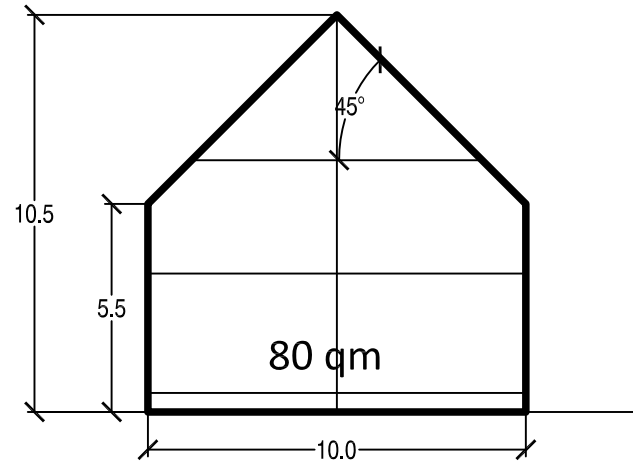
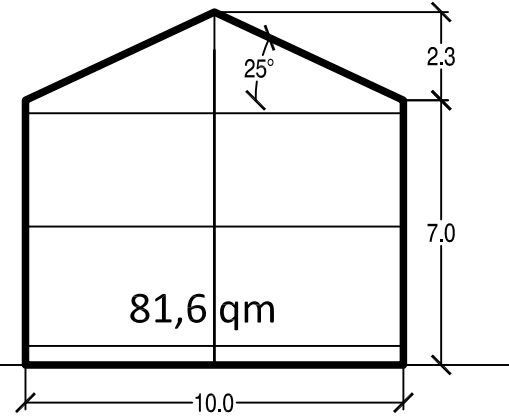


### Sattel-, Walm- und Zeltdach

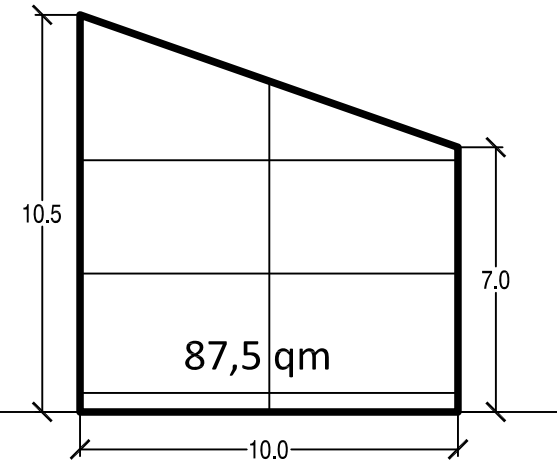


TH max 7,0 m  
FH max 10,5 m  
Neigung 10° - 51°

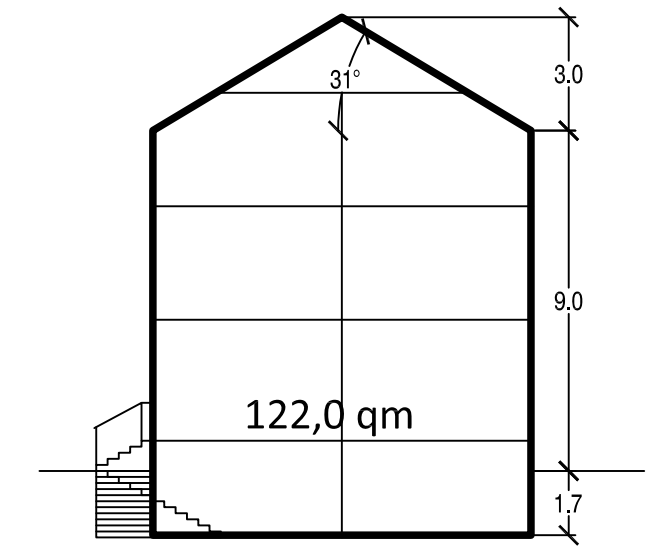


TH max 7,0 m  
FH max 10,5 m  
Neigung 10° - 51°

### Pulldach

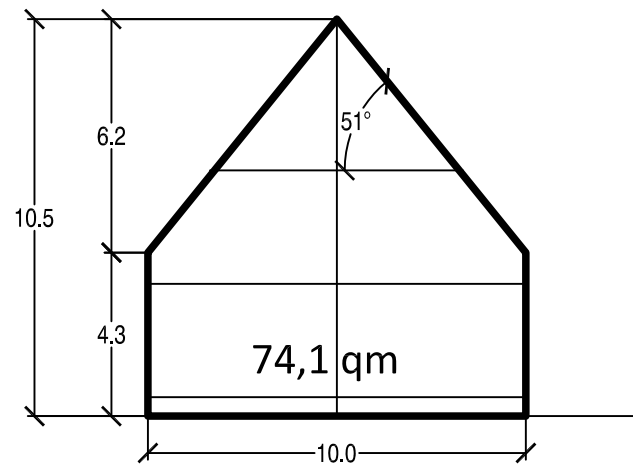


TH max 7,0 m  
FH max 10,5 m  
Neigung 10° - 51°

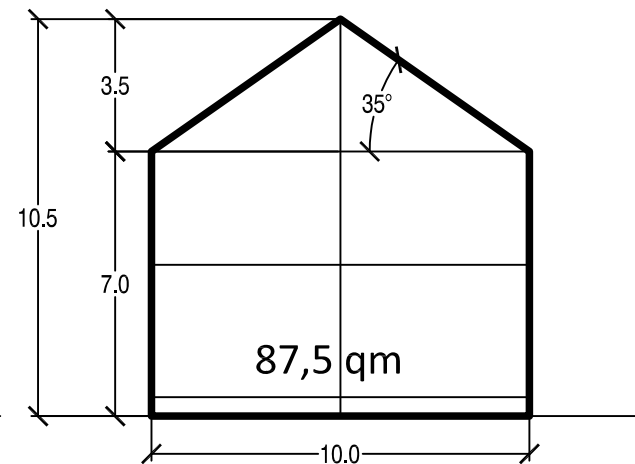


TH max 9,0 m  
FH max 12,5 m  
Neigung 10° - 51°

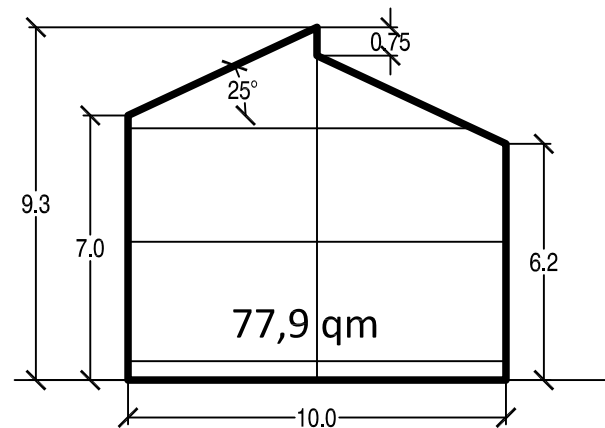
### versetztes Pulldach



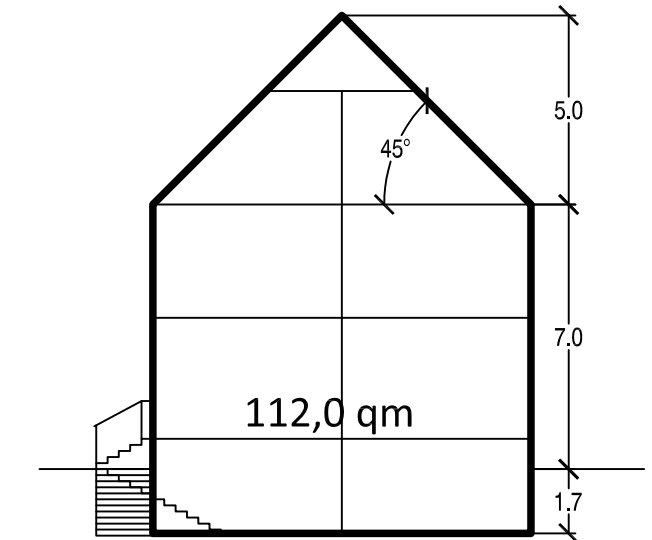
TH max 7,0 m  
FH max 10,5 m  
Neigung 10° - 51°



TH max 7,0 m  
FH max 10,5 m  
Neigung 10° - 51°



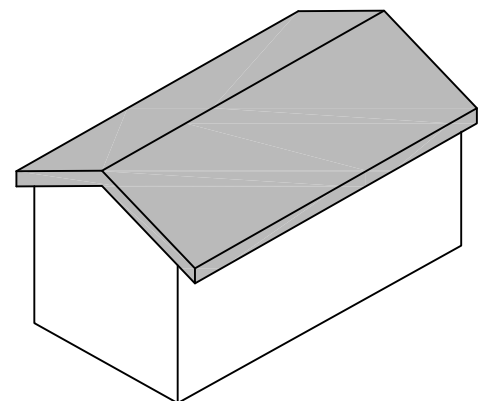
TH max 7,0 m  
FH max 10,5 m  
Neigung 10° - 51°



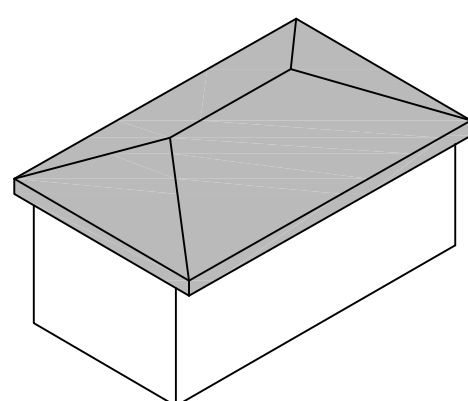
TH max 9,0 m  
FH max 12,5 m  
Neigung 10° - 51° **Allgemeines Wohngebiet 1**

### Allgemeines Wohngebiet 2 - 4

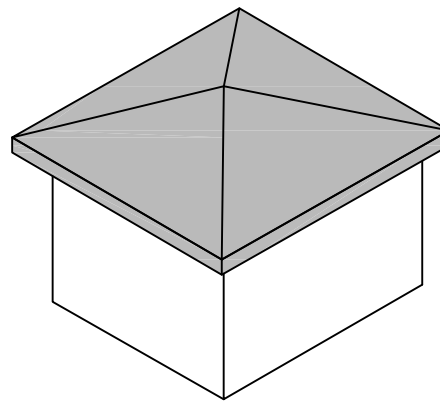
Satteldach



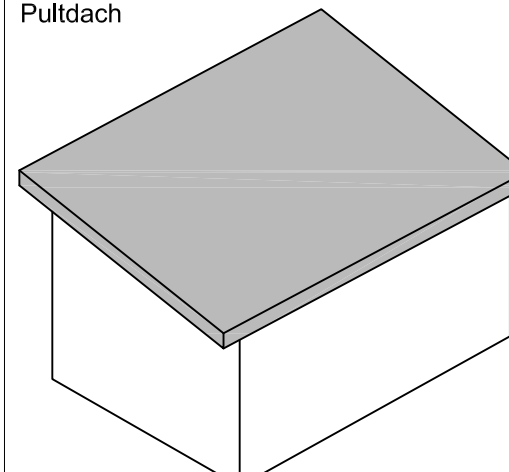
Walmdach



Zeltdach



Pulldach



Markt Schwanstetten  
Baugebiet Leerstetten

Planinhalt:  
Darstellung von Höhen- und Neigungsparametern

Maßstab:  
1:1.250

bearb.: PB  
gez.: PB

Format: DIN A3  
Datum: 11.03.2015

Plannr.:  
781-06-D

Alte Schule Burg  
86470 Thannhausen  
Tel. 08281 99940-0  
Fax 08281 99940-40  
info@tb-markert.de

Hessestraße 5-7  
90443 Nürnberg  
Tel. 0911 999876-0  
Fax 0911 999876-54  
www.tb-markert.de

**TB|MARKERT**  
Stadtplaner · Landschaftsarchitekten